

# FRAMELESS 300X300 PANEL LIGHT

Model No. PFM3-411401



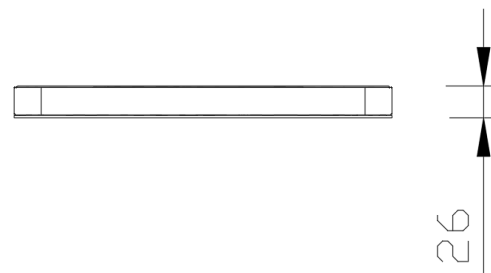
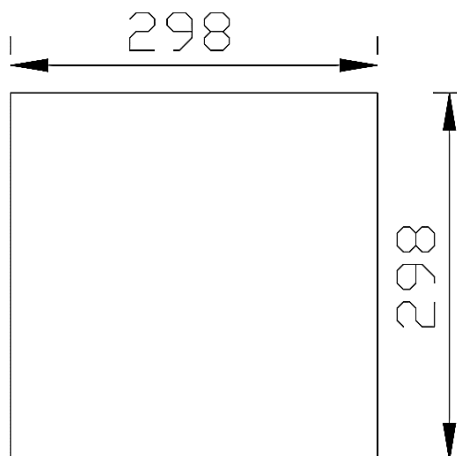
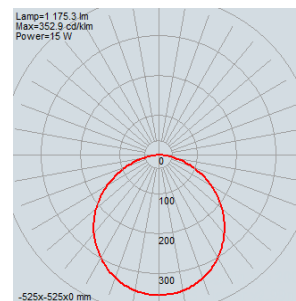
## SPECIFICATION

Dimensions (mm)	L298 x W298 x H26
Housing	AL. Extrusion / Acrylic
Beam angle	110°
Weight	2300g
Accessory	-
Light source	SMD type LED
Luminous Flux	1175 lm / Max
Color Temp.	3000K, 4000K, 5700K
CRI	Ra 80
Bin step	3 step
Input Voltage	AC220~240V, 50~60Hz
Power	15W
Operation Temp.	-20°C ~ +40°C

\* All technical information in this document is subject to change.

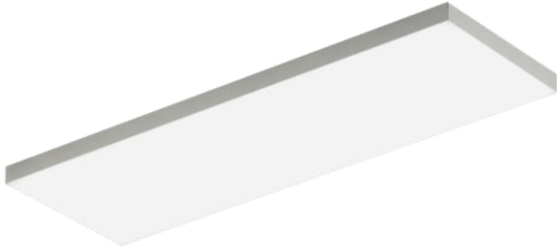
## FEATURES

- \* Unique Frameless Design
- \* Seamless Jointing
- \* Even and Soft Light Beam
- \* Caution when installing : Make sure the LEDs are not in contact with each other



# FRAMELESS 200X600 PANEL LIGHT

Model No. PFM2-411201



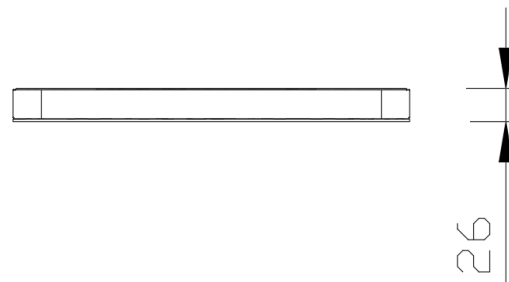
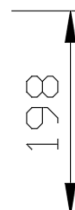
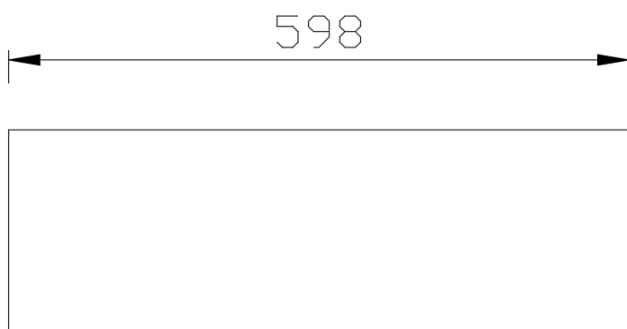
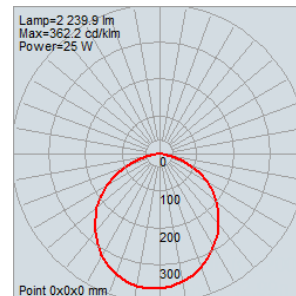
## SPECIFICATION

Dimensions (mm)	L600 x W200 x H26
Housing	AL. Extrusion / Acrylic
Beam angle	110°
Weight	2600g
Accessory	-
Light source	SMD type LED
Luminous Flux	2200 lm / Max
Color Temp.	3000K, 4000K, 5700K
CRI	Ra 80
Bin step	3 step
Input Voltage	AC220~240V, 50~60Hz
Power	25W
Operation Temp.	-20°C ~ +40°C

\* All technical information in this document is subject to change.

## FEATURES

- \* Unique Frameless Design
- \* Seamless Jointing
- \* Even and Soft Light Beam
- \* Caution when installing : Make sure the LEDs are not in contact with each other



# FRAMELESS 600X600 PANEL LIGHT

Model No. PFM6-4116O4



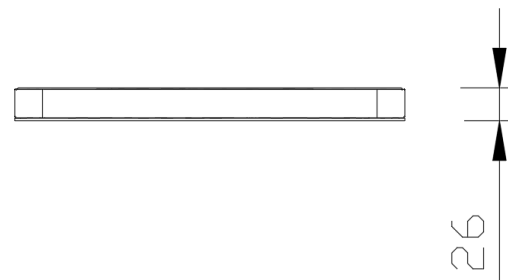
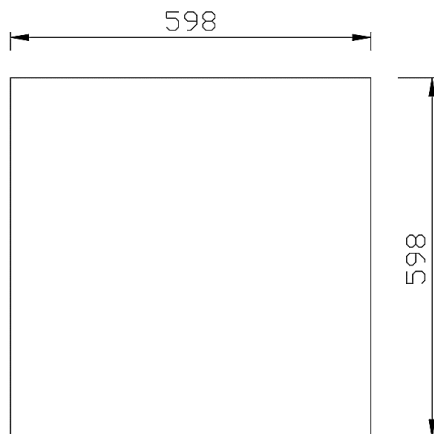
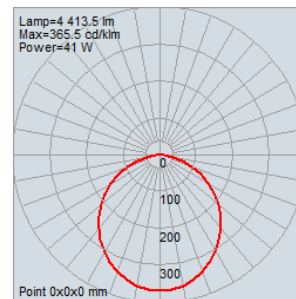
## SPECIFICATION

Dimensions (mm)	L598 x W598 x H26
Housing	AL. Extrusion / Acrylic
Beam angle	110°
Weight	4300g
Accessory	-
Light source	SMD type LED
Luminous Flux	4900 lm / Max
Color Temp.	3000K, 4000K, 5700K
CRI	Ra 80
Bin step	3 step
Input Voltage	AC220~240V, 50~60Hz
Power	45W
Operation Temp.	-20°C ~ +40°C

\* All technical information in this document is subject to change.

## FEATURES

- \* Unique Frameless Design
- \* Seamless Jointing
- \* Even and Soft Light Beam
- \* Caution when installing : Make sure the LEDs are not in contact with each other



# FRAMELESS 300X1200 PANEL LIGHT

Model No. PFM3-411301



## SPECIFICATION

Dimensions (mm)	L1188 x W298 x H27
Housing	AL. Extrusion / Acrylic
Beam angle	110°
Weight	4600g
Accessory	-
Light source	SMD type LED
Luminous Flux	5000 lm / Max
Color Temp.	3000K, 4000K, 5700K
CRI	Ra 80
Bin step	3 step
Input Voltage	AC220~240V, 50~60Hz
Power	45W
Operation Temp.	-20°C ~ +40°C

\* All technical information in this document is subject to change.

## FEATURES

- \* Unique Frameless Design
- \* Seamless Jointing
- \* Even and Soft Light Beam
- \* Caution when installing : Make sure the LEDs are not in contact with each other

